

EverLine

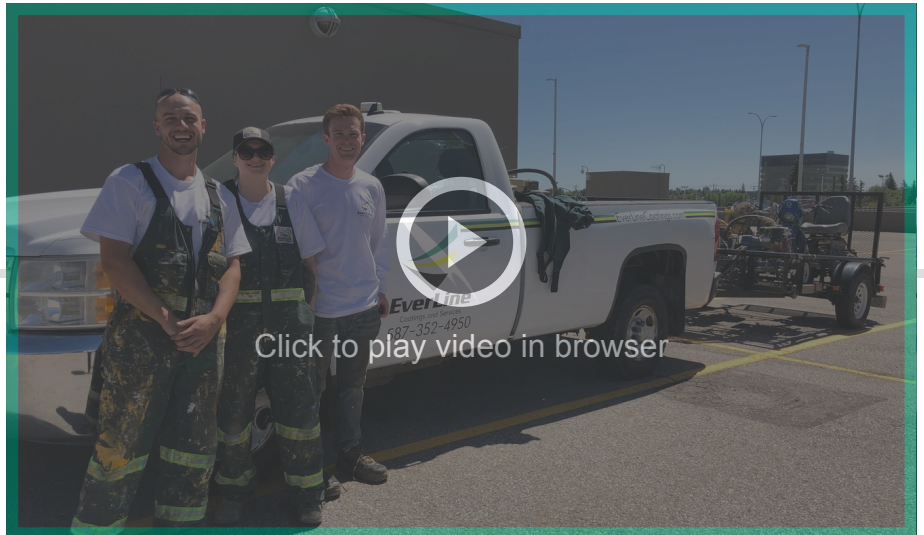
Coatings and Services

***RETHINK* PAVEMENT MAINTENANCE**

**VINTAGE GROVE - LOT
RESTORATION - OCT 2023**



OUR TEAM



JUSTIN WILLIAMS

PRESIDENT

More than 5 years experience in the commercial service industry and 15 plus years in real estate sale and investment. I look forward to helping my clients a total solution in regards to pavement maintenance.



TYRELL 'TY' HAITH

CREW LEADER

Ty serviced in the US Army for 4 years as a Satellite Transportable Terminal Operator. He now brings his technical and leadership skills to Everline family!





OUR STORY

It started in 2012 with one machine and the determination to disrupt an industry. Since then, EverLine has grown each and every year.

Line striping began as—and still is—our core business; But in our journey to become a one-stop shop for all of our customers, we have expanded our offerings to include a breadth of pavement maintenance services.

As an award-winning business with locations across the country (and now with two appearances on CBC's Dragon's Den) we are uniquely poised to offer our great customer service, value and quality to each and every parking lot in America.

ACCREDITATION

- Fully Certified Safety Program (COR)
- \$1,000,000 Commercial General Liability Insurance
- Incorporated in the State of North Carolina
- Fully Licensed Business in Triangle Area
- ISNetworld / Contractor Check / Comply Works / Avetta Certified

OUR PURPOSE

For Our Clients

EverLine contributes to society by providing cutting-edge solutions with a focus on safety objectives, value and aesthetic excellence for our clients and their patrons.

For Our People

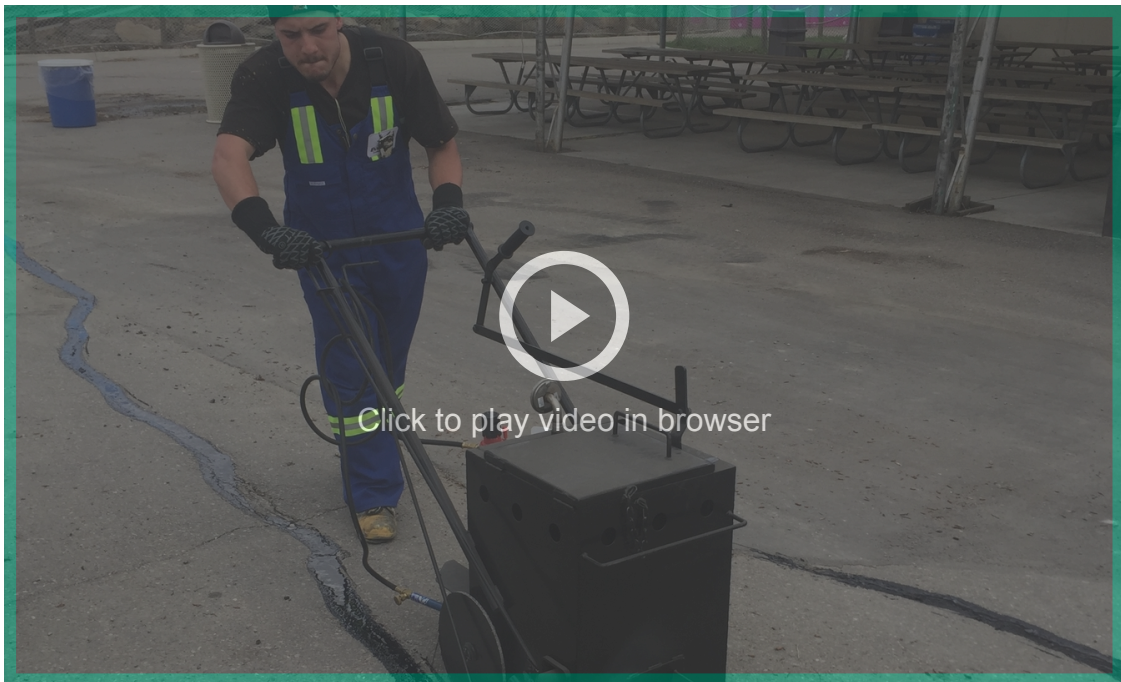
Our purpose is to provide our employees with a workplace that is considered a vehicle for personal and professional growth.

OUR KEYS TO SUCCESS

- 01 Our high quality is systemized.
- 02 We constantly innovate.
- 03 We answer the call.



OUR EXPERTISE



WATCH US IN ACTION IN THIS 3-MIN VIDEO!

Line Striping

- Parking Lots
- Custom Stenciling
- Durable Traffic Markings
- Interior Safety Lines

Asphalt Maintenance & Repairs

- Crack Filling
- Sealcoating
- Pothole Repair & More

Parking Lot Services

- Power Sweeping
- Power Washing
- Sign/Wheel Stop/Bollard Installation

Epoxy & Specialty Flooring

- Slip-resistant Solutions
- Durable Flooring
- Aesthetic Improvement

Parking Garage Maintenance

- Membrane Repair & Installation
- Sweep & Scrub
- Wall & Ceiling Painting



WHY WORK WITH EVERLINE?

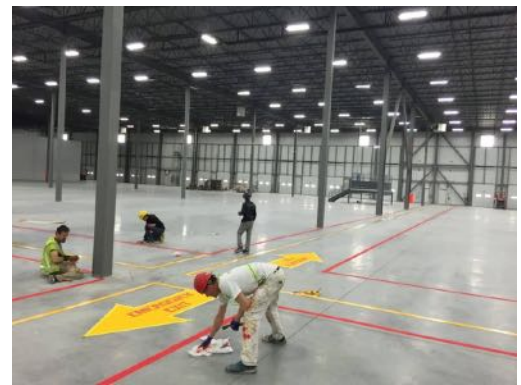
Our mission is to be known as the company that changed everything in our industry and you'll see how we are doing it.

- We are here to make an impact. We hold ourselves to an extremely high standard and are breaking new ground. We are excited about every single project that we are a part of - it's an opportunity to prove ourselves.

We strive to be the leaders in our field when it comes to communication, credibility, professionalism and quality.

We are cutting edge - and you'll get much better service because of it. We bring:

- State-of-the-Art Technology for great project management
- Top quality products and modern equipment to ensure that you are getting the best options and value available for your project's needs
- Innovative solutions that will maximize value on every project that we work on



EverLine
Coatings and Services

Rethink Pavement Maintenance

EverLineCoatings.com

| 4

WE PROVIDE GREAT QUALITY & EXPERIENCE BY FOLLOWING OUR C.O.R.E. QUALITY SYSTEM!

Clear scope: We ensure that there is a clear scope of work generated from our clients for our crews. This guarantees the finished project matches your vision.

Operations report: Utilizing cloud-based technology provides you with up-to-date and immediate progress reports in real time. You will always be in-the-know.

Reach out: We contact you when our crews mark the report as complete. This provides you a final update on the project - Ready for your review.

Evaluate: We ask for your feedback and then analyze the project and experience you had with us. This allows us to become better service providers and offer better pricing.

WE ARE DRIVEN

Dedicated to giving all of our effort, respect, expertise and attention to our clients, our stakeholders and each other every day.

Resourceful by constantly innovating to provide better solutions.

Integrity-Focused through working with honesty, purpose, and delivering on our promises.

Value Based by operating at all times according to our values of respect, sustainability, mutual support and community enhancement.

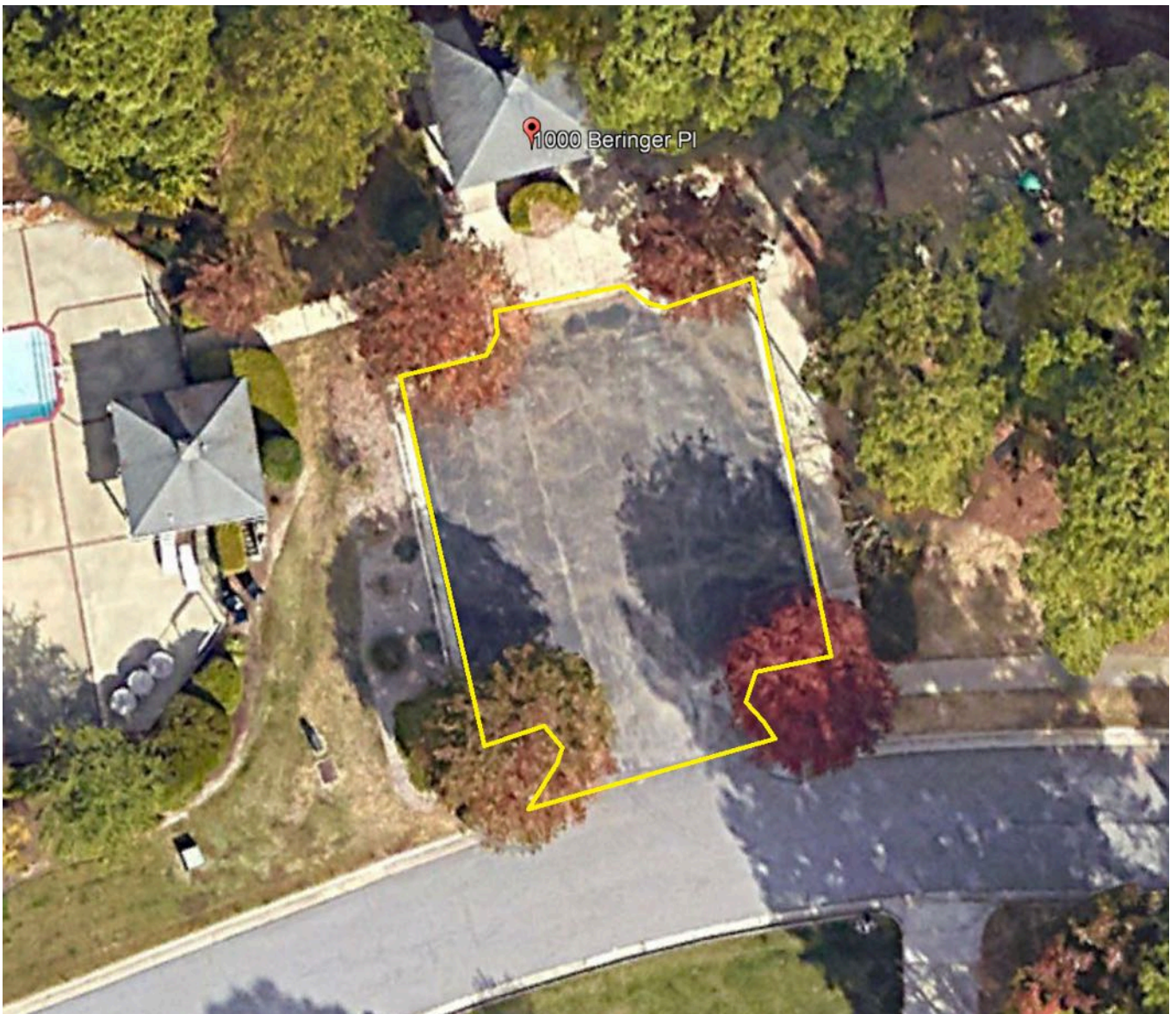
Excelling the set standards of communication, credibility, professionalism and quality for our industry and will continue to lead in all ways possible.

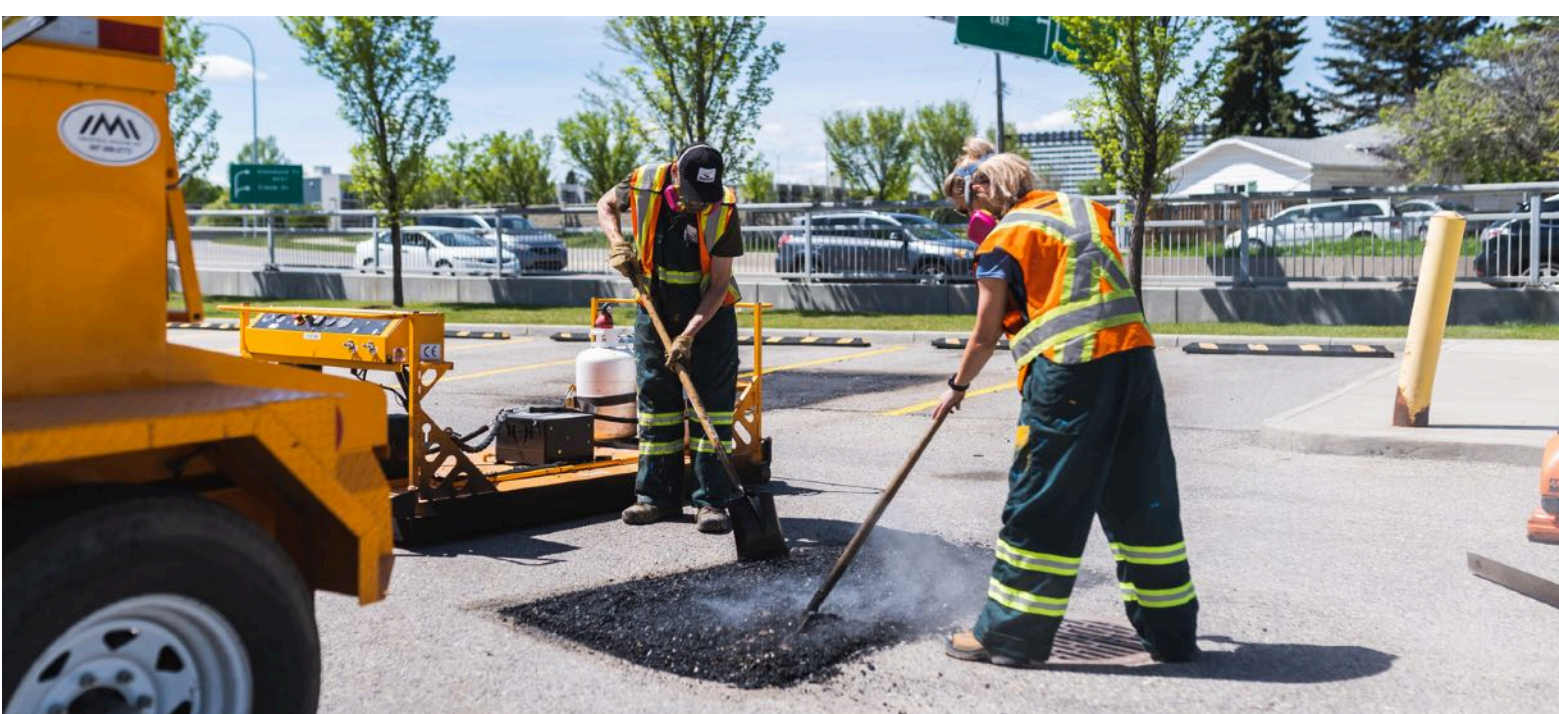
Nourishing our employees by providing an environment that is fun, friendly and encourages the achievement of their full potential.





SCOPE OF WORK





ASPHALT MAINTENANCE SERVICES

Project Location: 1000 Beringer Pl, Apex, NC 27502

DESCRIPTION	PRICE	QTY	SUBTOTAL
<input checked="" type="checkbox"/> Infrared Hot-Mix Asphalt Repair: Includes the removal and replacement of existing, failed asphalt.	\$962.18	1	\$962.18
Scope of Work: - 5 small potholes/alligator crack locations.			
Service Notes: <ul style="list-style-type: none">- Service includes the removal, recycling, or disposal of failed existing asphalt material utilizing our specialized Infrared Technology.- Intact surrounding asphalt prepared using our CRF Asphalt Rejuvenator to ensure bonding with new asphalt materials.- Insertion and compaction of Hot-Mix materials using mechanical means to ensure proper asphalt compaction and density.- Highly experienced and enthusiastic staff on site at all times.			
SUBTOTAL			\$962.18
TAX (7.25%)			+\$69.76
TOTAL (INCLUDES TAX)			\$1,031.94





ASPHALT CRACK-FILLING SERVICES

Project Location: 1000 Beringer PI, Apex, NC 27502

DESCRIPTION	PRICE	QTY	SUBTOTAL
<input checked="" type="checkbox"/> Crack-Filling: Includes the preparation and filling of asphalt cracks using Direct Fire (DF) Crack Sealant.	\$610.61	1	\$610.61

Scope of Work:
- Approx. 265 LF of cracks.

- Service Notes:**
- Existing cracks to be cleaned out, prepared, and filled using our Direct Fire Crack Sealant.
 - Preparation includes the use of a high pressure heat-lance to blow out any rocks or debris, burn away any vegetation, and bring the asphalt up to temperature in order to prepare it to receive the new crack filling compound.
 - Includes the filling of: Existing cracks within noted scope that meet a minimum measurement of 1/8" in width, and 1/8" in depth.
 - Excludes any cracks larger than 3" in width or depth as cracking this severe requires more than general maintenance (Crack-Filling) can provide. Also excludes filling of cracks within 1 foot of an unrepaired pothole.
 - Highly experienced and enthusiastic staff on site at all times. Clean-up done daily and in full upon completion.

TOTAL (INCLUDES TAX)	\$654.88
-----------------------------	-----------------



ASPHALT SEALCOATING SERVICES

Project Location: 1000 Beringer PI, Apex, NC 27502

DESCRIPTION	SUBTOTAL
<div><input checked="" type="checkbox"/> Sealcoating: Includes the application of our ExpertSeal Resisto Asphalt Sealant.</div>	\$1,861.12
<div>Scope of Work: - Approximity 3760 sqft of asphalt. -</div>	
<div><input type="checkbox"/> Additional Coats (Optional): Includes the option for an additional third coat if requested.</div>	\$0
<div>Service Notes: - Preparation includes the blowing, sweeping, and oil spot priming of the application surface. - Price includes two (2) full coats as recommended by the sealant manufacturer. - We recommend all foot and vehicular traffic remain off of the surface for a minimum of 24 hours - Highly experienced and enthusiastic staff onsite at all times. Clean-up done daily and in full upon completion.</div>	
TOTAL (INCLUDES TAX)	\$1,996.05





PROFESSIONAL LINE PAINTING SERVICES

Project Location: 1000 Beringer PI, Apex, NC 27502

DESCRIPTION	SUBTOTAL
<input type="checkbox"/> Line Striping - Repaint: Includes the repainting of existing markings.	\$0
Scope of Work: - - Does not include the painting of parking blocks or curbs unless specifically noted.	
<input checked="" type="checkbox"/> Line Striping - New Layout: Includes the layout of new traffic markings.	\$446.97
Scope of Work: - 12 stalls	
Service Notes: - Traffic markings to be painted using high quality Municipal-Grade traffic paint. - All high traffic areas will receive 2 coats of paint (Crosswalks, speed bumps, stop bars etc). - Highly experienced and enthusiastic staff on site at all times. - Clean-up done daily and in full upon completion.	
TOTAL (INCLUDES TAX)	\$479.38



AGREEMENT

In order for us to provide the best service at the best possible price, we request our clients assistance in...

- Having work areas clean and free of debris, tools or obstacles before our arrival - This ensures efficient production of our crews.
- Irrigation or sprinkler systems turned off before and during our scheduled visit.
- Adequate lighting turned on for the entirety of our scheduled visit.
- Ensuring the site is a safe working environment (according to OH&S standards) for our team members.

All work will be completed as per the Scope of Work provided to EverLine Coatings.

We are here to work with you! If you are unable to accommodate the above requirements, please let us know before our scheduled visit so we can make necessary adjustments.

If our crews arrive on site and any of the above requirements are not met there may be additional fees charged above the quoted amount.

Please feel free to contact us if you have any questions or if there is anything else we can add to make this a great experience.

We look forward to working with you!

EverLine Coatings

 **SIGNATURE**
Justin Williams

Justin Williams |

Grandchester Meadows Inc

 **SIGNATURE**
Kalyn Robbins

Kalyn Robbins | *Association Management Specialist*

For payment we accept Check, E-transfer, and Credit Cards. Interest at 2.00% per month (24.00% per annum) will be charged on accounts over 30 Days.

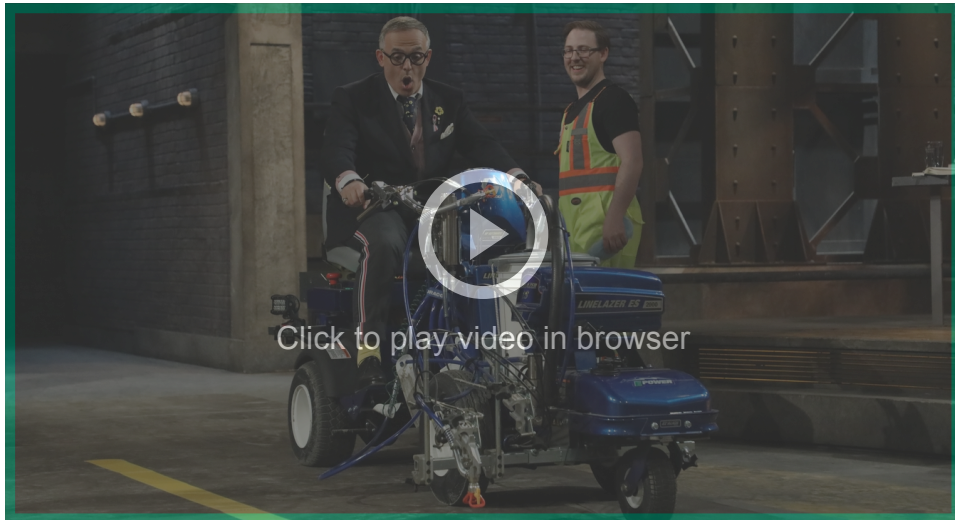


EverLine
Coatings and Services

Rethink Pavement Maintenance

EverLineCoatings.com

| 11



WE RECEIVED A DEAL ON DRAGON'S DEN!



THANK YOU

EverLineCoatings.com | hello@everlinecoatings.com | 1-833-383-7546

